

CAP18™ SITE SUMMARY



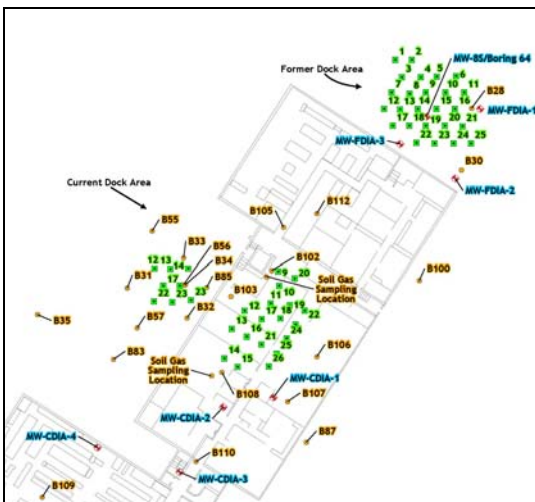
Site Name, Location: YSI, Incorporated, Yellow Springs, Ohio
Consultant: BHE Environmental, Inc., Cincinnati, Ohio

SITE CONDITIONS AND APPROACH

Groundwater impacted with VOCs is present in two areas of the site: the Former Loading Dock (FLD) with carbon tetrachloride (CT) and chloroform (CF), and the Current Loading Dock (CLD) with 1,1,1-trichloroethane (TCA), 1,1-dichloroethene (DCE), and 1,1-dichloroethane (1,1-DCA). Soils at the site are glacial till materials overlying limestone bedrock at 20-25 feet below grade.

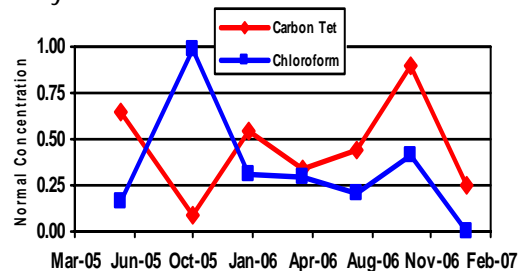
- *Carbon tetrachloride and chloroform concentrations up to 32 ug/L*
- *TCA, DCA, and DCE concentrations up to 600 ug/L*
- *Glacial till soil, low permeability*
- *Direct push injection with 25 injection points per area*
- *8,500 lbs CAP18™*

There were 25 injection points in each area. Access in the CLD was limited because many of the locations were in the building's basement. Each point received approximately 170 lbs of CAP18™ injected via direct-push methods.

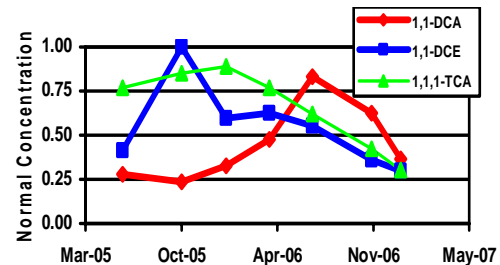


TREATMENT RESULTS

At the FLD, average normalized CT concentrations initially increased after injection but have decreased by 75% since then, with a current maximum concentration of 7.04 ug/L. CT degradation has been matched with CF formation, which has subsequently also degraded and is currently not detected.



At the CLD, average normalized TCA concentrations have decreased by 70%. Concentrations of DCA and DCE initially increased, but have subsequently decreased by 64% and 70%, respectively, relative to their maximum concentrations. TCA concentrations are below cleanup goals.



- *Single injection of CAP18™*
- *Strongly reducing conditions maintained for 1.5 years to date*
- *Complete dechlorination of carbon tetrachloride and of trichloroethane occurring*

PRODUCTS THAT EMPOWER OUR CLIENTS

DBI Remediation Products, LLC
 10420 Hague Road, Suite D, Fishers, IN 46038
 Tel: (317) 576-1998 www.dbiproducts.com

©2007 DBI Remediation Products, LLC

