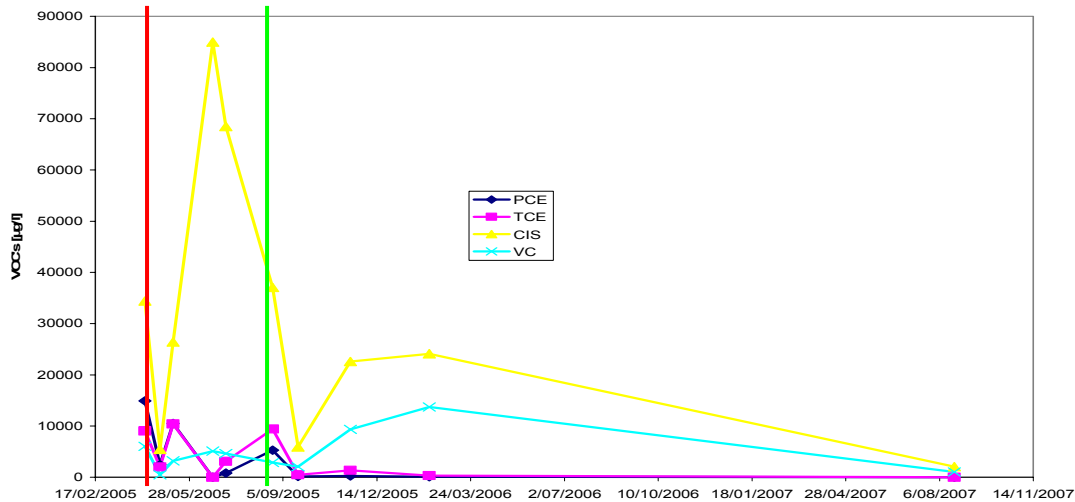
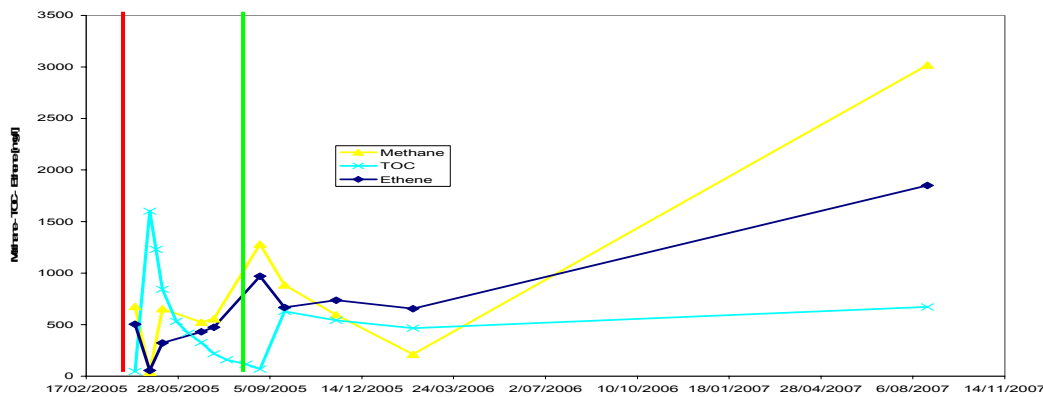
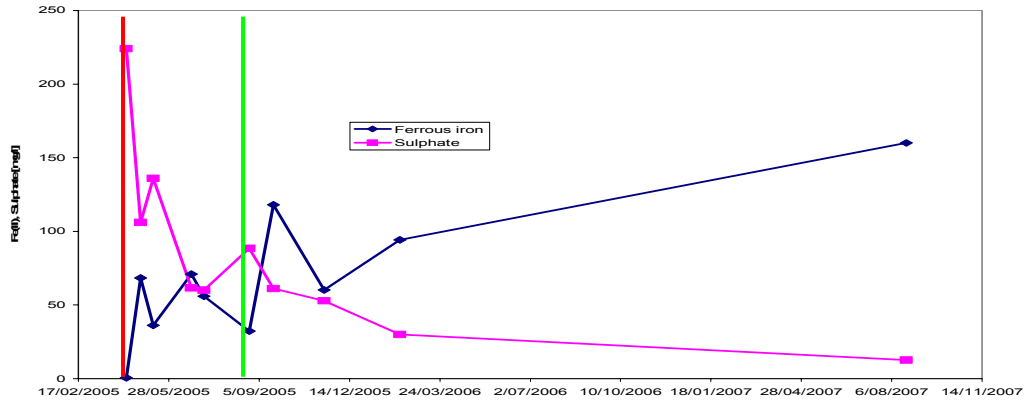


Site Name : Former Dry Cleaner. **Location :** Hoboken, Belgium.

Injection Date : August 2005.

Program : 80 kg of CAP18™ in a one-well pilot test versus molasses on the same location. Monitored for 2 years. Full scale CAP18™ injection already executed in August 2007.

Site conditions : Silty sand. First molasses injection then CAP18™ injection. Filter screen fixed injector from 2 till 3 m-bg.



Conclusions : Both stimulated strongly reducing conditions, but regarding the TOC concentration, it is obvious that CAP18™ will last much longer (already 2 years). Molasses requires reinjection every ~90 days. ROI of at least 2 m.